

During the year 2011 the UTM-CSIC has operated as owner the technical management of Research Vessels R/V **García del Cid** and R/V **Sarmiento de Gamboa**, and achieved the technical and logistical support of the RV **Hespérides**, being two of them Large Scale Scientific Technology Facilities (ICT).

The marine operation has resulted in 594 days at sea, of which 93% are days of exploration in the Atlantic (Galicia Margin, Gulf of Cadiz, Canary Islands, South Atlantic, etc.), Mediterranean Sea (Tyrrhenian Balearic Islands), CARibbean Sea, etc., and the *Malaspina* Expedition that circumnavigate the world.

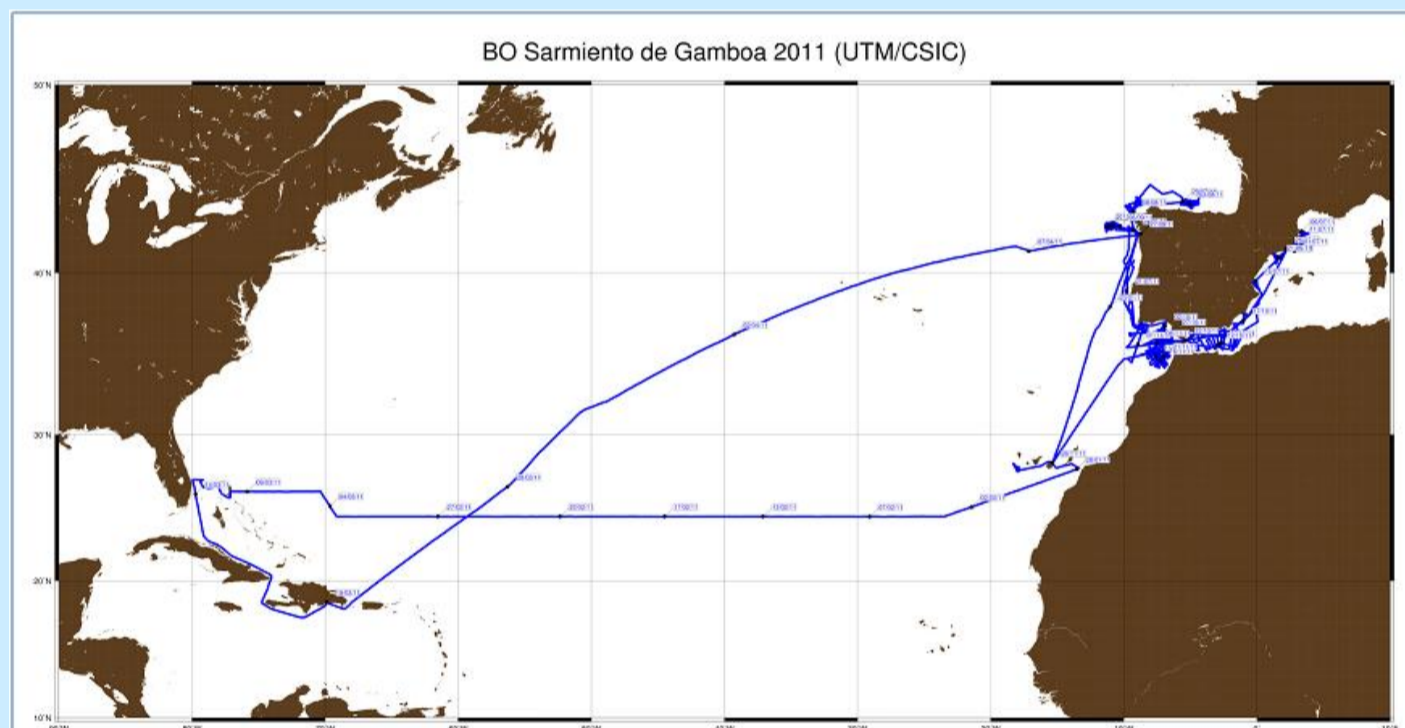
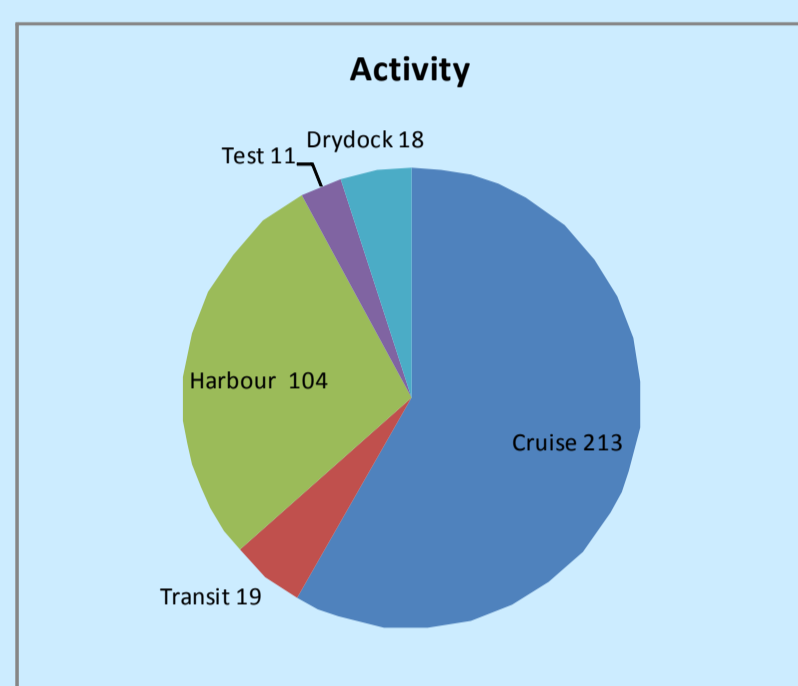
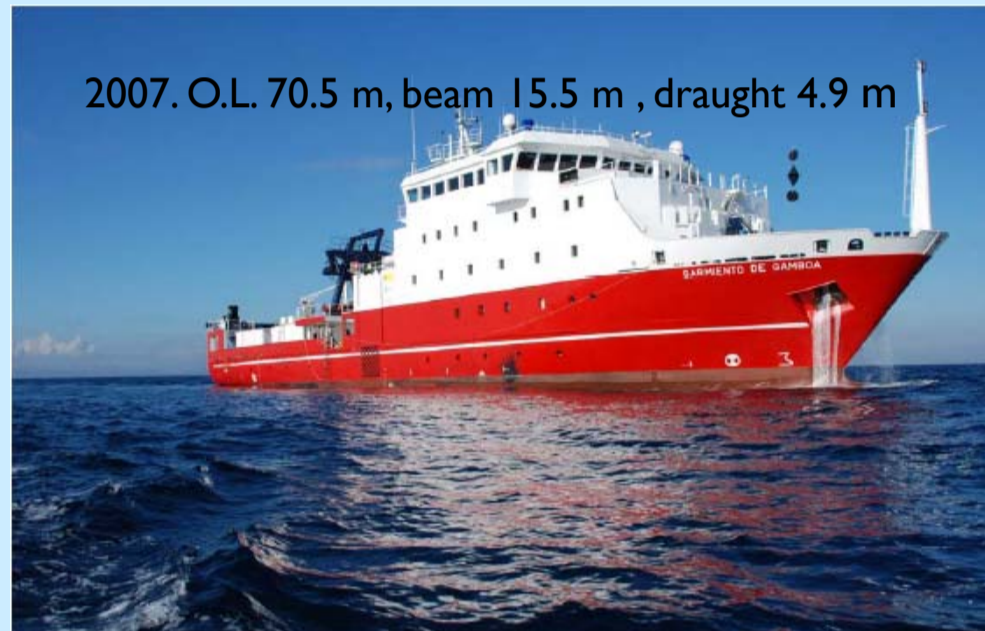
The UTM has succeeded in supporting 30 research cruises of which 20 were from the National R & D Plan, of the Ministry of Science and Innovation, including:

- Project "CONSOLIDER" MALASPINA expedition ,two separate surveys with RV Sarmiento de Gamboa and the R/V Hespérides.
- Project of the Galician Regional Government,
- Project of the Ministry of Foreign Affairs to the extension of the continental shelf offshore the Canaries.
- A small survey requested by Civil Protection (PEVOLCA) around the **El Hierro** Volcanic Island .
- Another 4 surveys for the EU projects,
- A survey for testing of scientific equipment.

All these activities have mobilized a number of more than 400 scientists from national and international institutions, as well as 143 technicians/ engineers for technical support to the campaign, along with the crew of RV Hespérides (55), RV Sarmiento de Gamboa (32) and RV García del Cid (14).



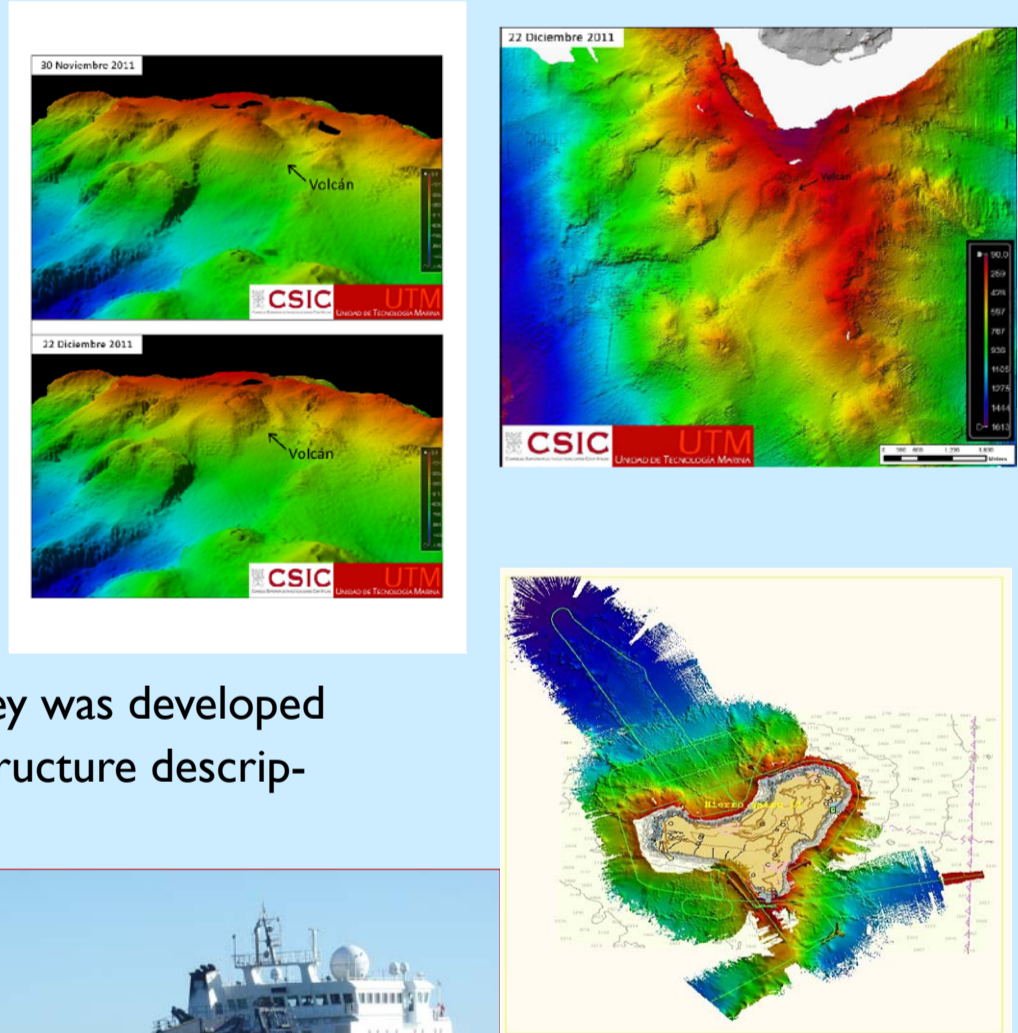
R/V Sarmiento de Gamboa



R/V Sarmiento de Gamboa track during LEG-8 Malaspina Expedition

El Hierro Is. Volcanic Crisis

During 4 days, R/V Sarmiento de Gamboa developed a rapid response cruise in El Hierro Island waters for defining with multi-beam the extension of undersea volcanic eruption. Also seismic survey was developed for sub bottom structure description.

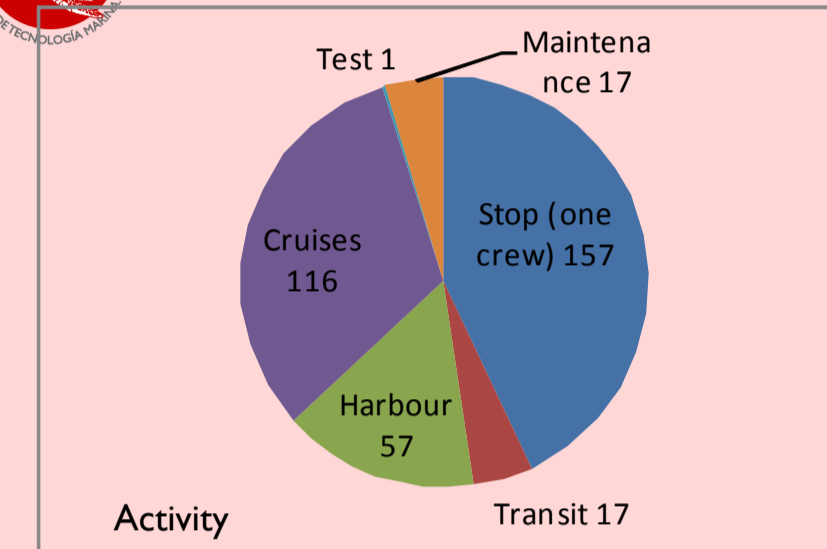


Seismic Equipment completed: 6 km streamer

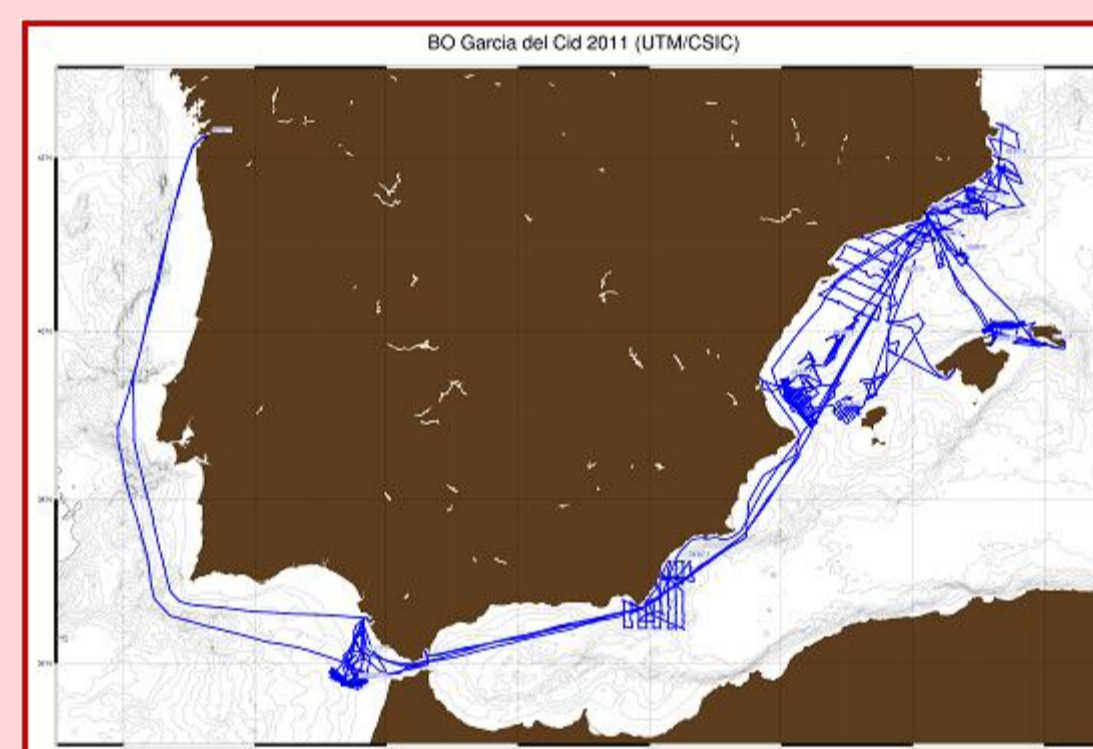
In 2011 the seismic scenario was completed and several cruises with 6 Km streamer were accomplished with success.



R/V García del Cid



35th years ii



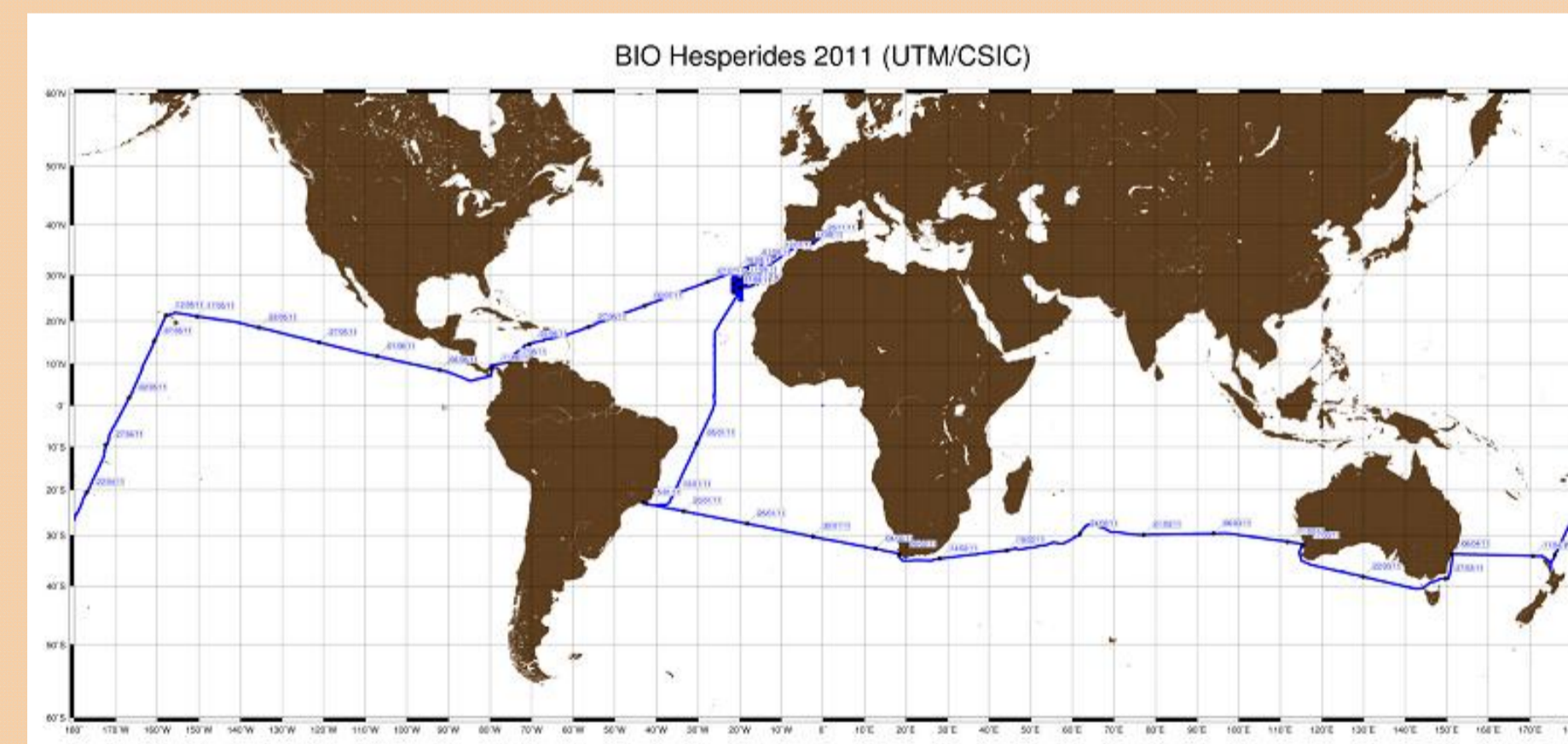
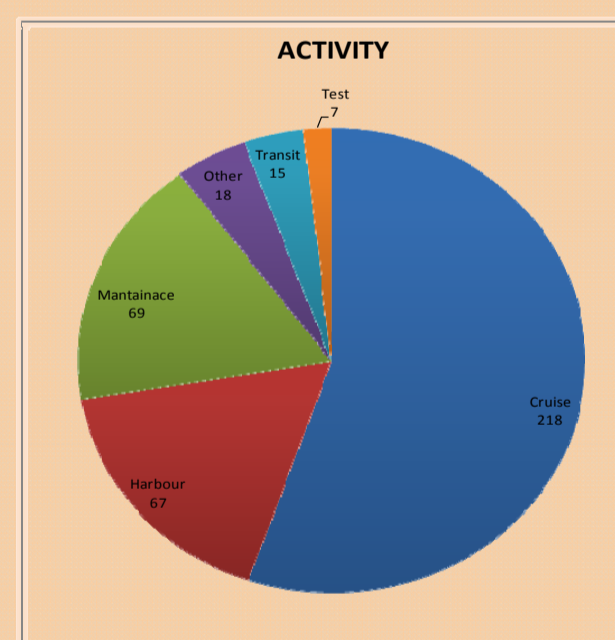
R/V García del Cid track in 2011



R/V Hesperides



Malaspina expedition started in Dec. 15th 2010. R/V Hespérides will carry out major part with circumnavigation. R/V Sarmiento de Gamboa developed an Atlantic cruise. (www.malaspina.es)



Porriño Facilities



Near Vigo, 1200 m² warehouse with two overhead cranes of 16 Ton each.

New Auxiliary Ship



S/V Casitérides was added to UTM fleet. This 1997 trawler is adapted for general purposes including as chase boat for seismic operations. 32 m O.L., 7 m beam, 360 kW

S/V Las Palmas



R/V Las Palmas is a Spanish Navy supplier for Antarctic stations services. With 190 days service and transportation of 125 researchers in 2010-2011

WWW.UTM.CSIC.ES

Contacts:

Arturo Castellón arturoc@cmima.csic.es

Juan José Dañoibeitia jjdanobeitia@cmima.csic.es

Luis Ansorena ansorena@cmima.csic.es